



DIN 555 Hex Nut

Leader-Fastener is a manufacturer and distributor of **DIN 555 Hex Nut**. We have a complete line of service from having invested in production plants, export department and to having a quality control team and center to meet your requirements. We regard quality as the life of the company. We persist in good quality as the first policy and have established a set of quality control and inspection system according to the international standard. We have carried out ISO9001 Quality Guarantee System in every course of production, transportation and selling. We do hope we could be your partner in business by topping quality, knight service and

competitive price in the near future and be your friends as well.

DIN 555 Heavy Hex Nut that available in a variety of sizes, diameter, and specifications.

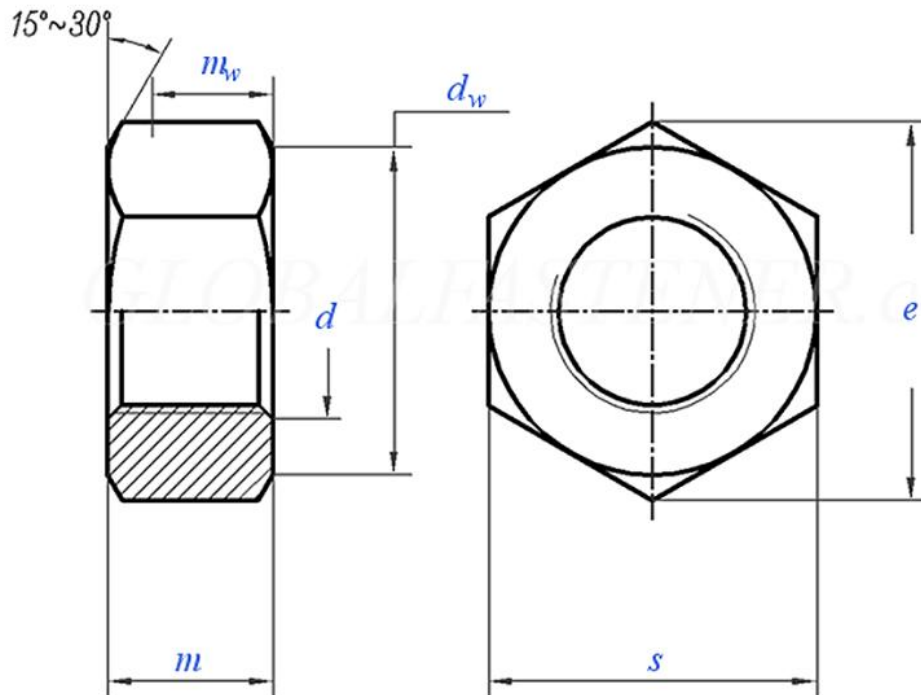
DIN 555 Heavy Hex Nut with a diameter ranging from M1 to M42 at most attractive prices. We deliver high-quality Heavy Hex Nuts in various materials such as nickel alloy, stainless steel, carbon steel, alloy steel, brass, and Aluminium etc.

Type Heavy **DIN 555 Hex Nut** is recognized for its corrosion resistance, weldability, high strength features in a wide variety of industries like equipment processing, mining, oil refineries, chemical factories, steel and Aluminium processing, transportation, and industrial construction etc. Check out here complete specification, sizes we offer. Come to get an instant quotation for **DIN 555 Hex Nut** from us.

Product Specification of DIN 555 Hex Nut

Material : Carbon steel, Stainless steel, Alloy Steel, Brass.

Finishment: Black, Zinc Plated, Zinc Yellow, HDG, Phosphate, DACROMET, Geomet, Magin, Ruspert, Teflon, etc.

DIN 555 - 1987 Hexagon Nuts—product Grade C, M5 To M100×6


Screw Thread		M5	M6	M8	M10	M12	M16	M20	(M22)	M24	(M27)	M30	(M33)	M36
D														
P	Pitch	0.8	1	1.25	1.5	1.75	2	2.5	2.5	3	3	3.5	3.5	4
d_w	min	6.7	8.7	11.5	15.5	17.2	22	27.7	29.5	33.2	38	42.7	46.5	51.1
e	min	8.63	10.89	14.2	18.72	20.88	26.17	32.95	35.03	39.55	45.2	50.85	55.37	60.79
m	Nominal Size	4	5	6.5	8	10	13	16	18	19	22	24	26	29
	max	4.6	5.6	7.25	8.75	10.75	13.9	16.9	18.9	20.05	23.05	25.05	27.05	30.05
	min	3.4	4.4	5.75	7.25	9.25	12.1	15.1	17.1	17.95	20.95	22.95	24.95	27.95
m_w	min	2.7	3.5	4.6	5.8	7.4	9.7	12.1	13.7	14.4	16.8	18.4	20	22.4
s	max=nominal size	8	10	13	17	19	24	30	32	36	41	46	50	55
	min	7.64	9.64	12.57	16.57	18.48	23.16	29.16	31	35	40	45	49	53.8
per 1000 units≈kg		1.11	2.32	4.62	10.9	15.9	30.8	60.3	80.2	103	154	216	271	369

Screw Thread		(M39)	M42	(M45)	M48	(M52)	M56	(M60)	M64	M72	M80	M90	M100
D													
P	Pitch	4	4.5	4.5	5	5	5.5	6	6	6	6	6	6
d_w	min	55.9	59.9	64.7	69.4	74.2	78.7	83.4	88.2	97.7	107.2	121.1	135.4
e	min	66.44	71.3	76.95	82.6	88.25	93.56	99.23	104.86	116.16	127.46	144.08	161.02

m	Nominal Size	31	34	36	38	42	45	48	51	58	64	72	80
	max	32.25	35.25	37.25	39.25	43.25	46.25	49.25	52.5	59.5	65.5	73.5	81.5
	min	29.75	32.75	34.75	36.75	40.75	43.75	46.75	49.5	56.5	62.5	70.5	78.5
m _w	min	23.8	26.2	27.8	29.4	32.6	35	37.4	39.6	45.2	50	56.4	62.8
s	max=nominal size	60	65	70	75	80	85	90	95	105	115	130	145
	min	58.8	63.1	68.1	73.1	78.1	82.8	87.8	92.8	102.8	112.8	127.5	142.5
per 1000 units≈kg		472	610	750	924	1130	1350	1600	1880	2520	3260	4680	6430

①,Material:

- a) Steel, Property class (material): $d \leq 39\text{mm}$: 5; $16\text{mm} < d \leq 39\text{mm}$: 4; $d > 39\text{mm}$ by agreement ; Standard: DIN 267-4
- b) Non-cutting working: nuts of material chemical composition: Property class 5 and 6 : $C \leq 0.5$, $P \leq 0.11$, $S \leq 0.15$ 。 Standard DIN 267-4-1983
- c) Machining from free-cutting steel: nuts of material chemical composition: Property class 5 AU and 6 AU : $C \leq 0.5$; $P \leq 0.12$; $Pb \leq 0.35$; $S \leq 0.34$. Standard DIN 267-4-1983